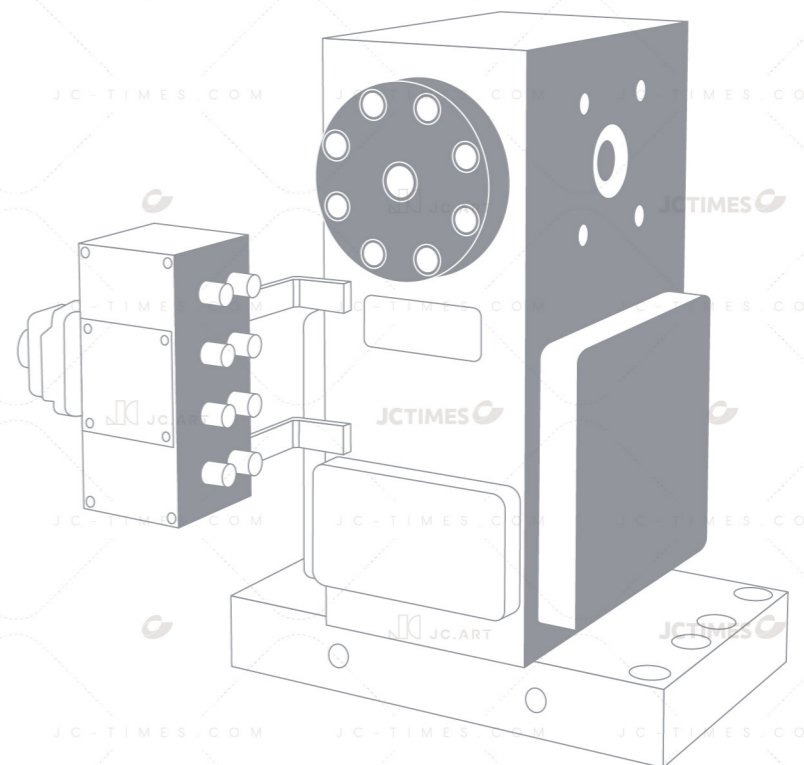


# PRECISION FEEDBACK SERIES



精密分配器系列

精诚时代集团

浙江精诚时代科技股份有限公司  
浙江台州黄岩新前建业路88号



WeChat  
Public Account



Jc-times.  
com

JCTIMES GROUP

Zhejiang JCTIMES Technology Co., Ltd

NO.88, Jianye Road, Intelligent Mold Town,  
Huangyan, Taizhou, Zhejiang, China

400-889-9977

From  
Dreams  
to  
Reality

知您所需  
创您所想

# 01 Company Profile

## Technical Capabilities & Innovation

JCTIMES Group is a global leader in flat die technology, with over 20 years of industry experience. We have witnessed and contributed to the development of China's flat die industry from its beginnings to its current position as a world-class competitor.

We operate the world's largest precision die manufacturing base and have our own surface treatment facility. By combining advanced international production equipment with leading fluid simulation technology, we focus on innovation to provide high-quality extrusion dies and customized solutions for global customers.

Holds a top global market position in extrusion dies, with products exported to over 40 countries/regions. Accumulated production exceeds 60,000 die sets, serving 10,000+ enterprises with premium services. Multiple Fortune 500 companies are our key accounts, and most domestic production line manufacturers maintain close strategic partnerships with JCTIMES.

## Core Products

Extrusion Flat Dies  
Blown Film Dies  
Coating Dies  
Precision Extrusion Equipment

Our products are widely used in electronics, automotive, building materials, aerospace, new energy (solar, EVs, lithium batteries), medical/healthcare, and food packaging industries, offering comprehensive solutions for customers.

## 技术实力与创新能力

作为全球平模头行业的领军品牌, 精诚时代集团深耕行业二十余年, 见证并推动了中国平模头产业从无到有、从小到大、从大到强的发展历程。

建有全球最大的精密模头智能制造基地, 并拥有独立的模头表面处理工厂。引入国际先进加工设备, 结合全球领先的流体仿真分析技术, 以技术创新为核心驱动力, 致力于为全球客户提供高品质的挤出模头及配套解决方案。

在挤出模头市场占有率位居全球前列, 产品远销40多个国家和地区, 累计生产60000多套模头, 为10000多家企业提供优质服务。全球多家500强企业均为精诚的重要客户, 国内多数生产线装备企业也与精诚建立了紧密的战略合作伙伴关系。

核心产品 挤出平模头

吹膜圆模头

涂布模头

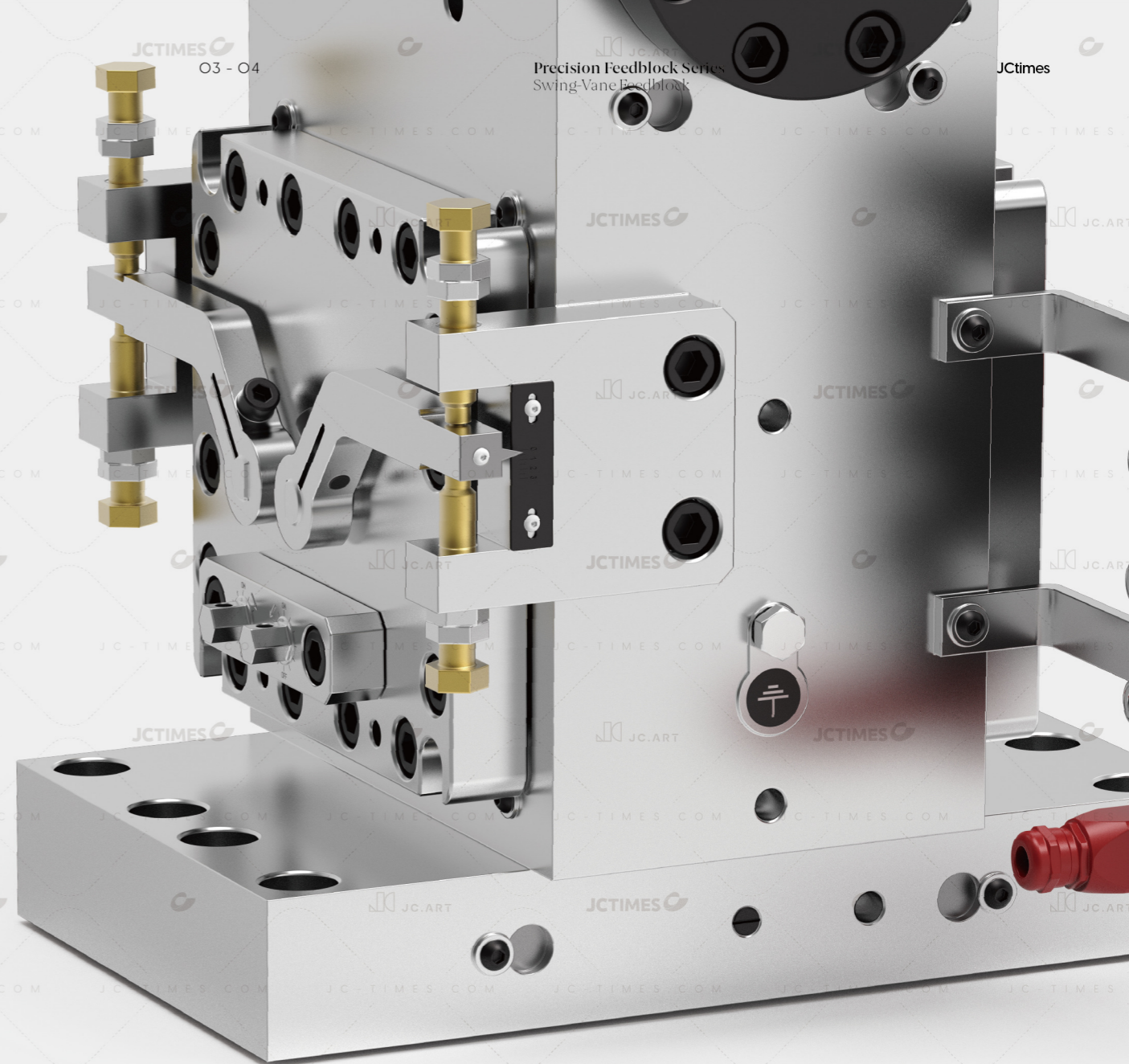
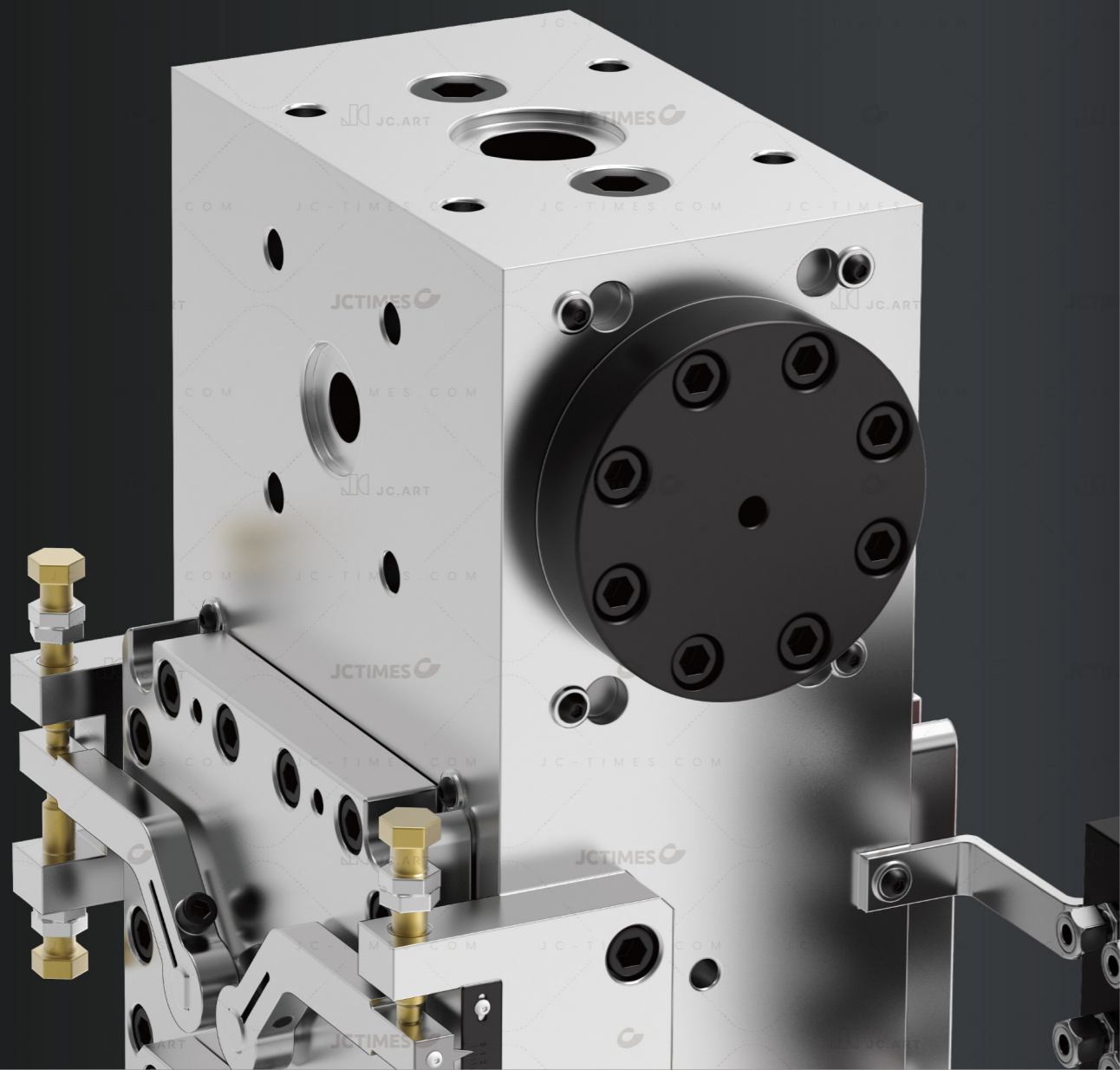
精密挤出配件

产品广泛应用于电子、汽车、建筑材料、航空航天、新能源(太阳能、动力汽车、锂电池)、医疗卫生、食品包装等领域, 为客户提供全方位的解决方案。

# O3 Swing-Vane Feedblock

© Layer ratio adjustment via swing vanes: The percentage of each layer is controlled by adjusting the position of the swing vanes. © Layer-number flexibility with selector rods: With selector rods, a 3-layer feedblock can produce 1- or 2-layer structures, while a 5-layer feedblock can produce 3- or 4-layer structures.

Applications: Suitable for cast film structures with up to nine layers, as well as PP and PS sheet/plate applications, with online adjustment available without shutdown.



摆叶分配器

© 采用摆叶调节各层百分比, 通过调节摆叶位置, 从而控制每层物料比例;  
© 使用排序杆, 3层分配器可以实现1-2层的制品, 5层分配器可以实现3-4层的制品的生产。

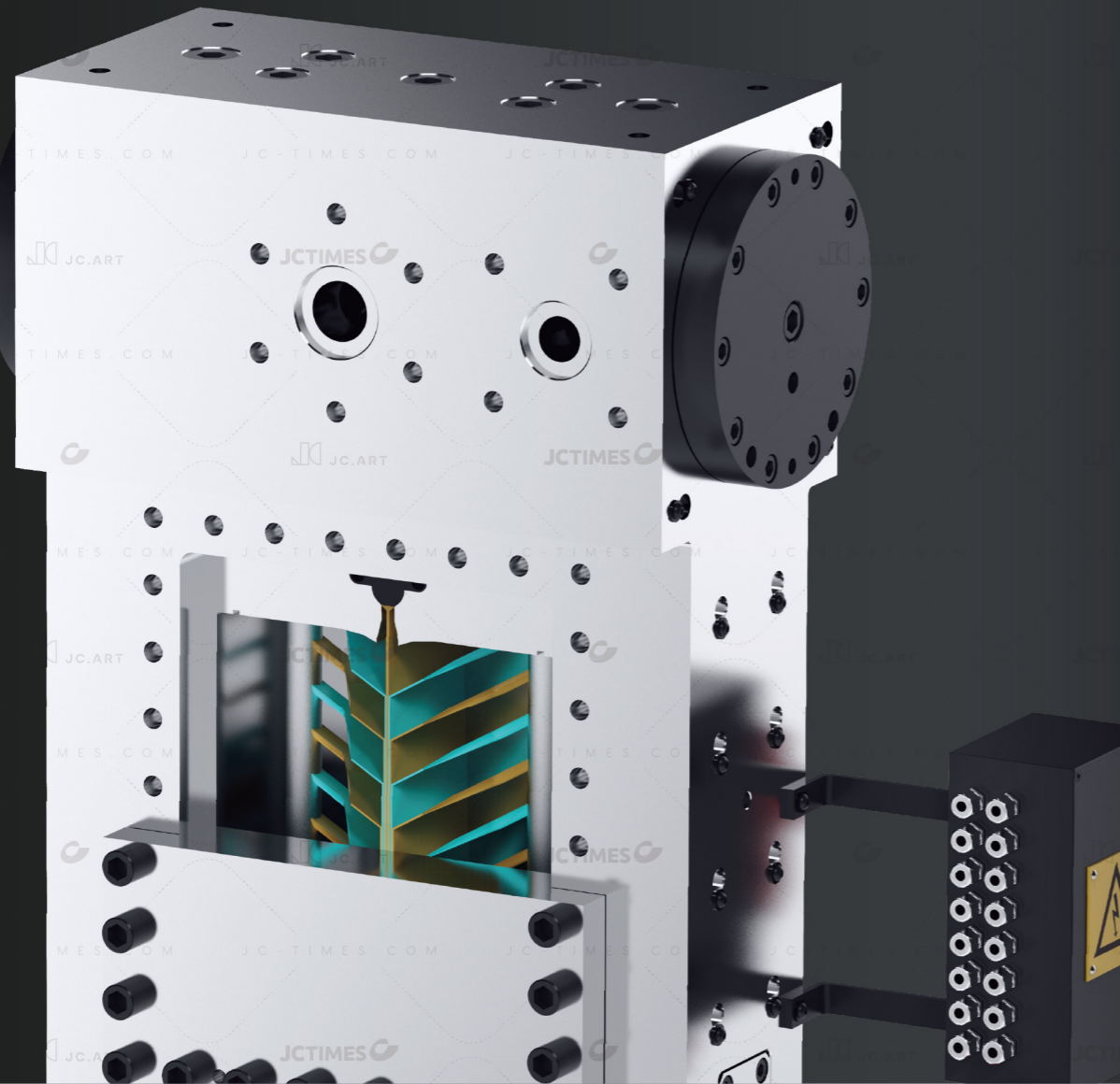
适用于九层及以下流延膜及PP, PS板片材等, 可实现在线不停机调节。

# O5 Nano Feedblock

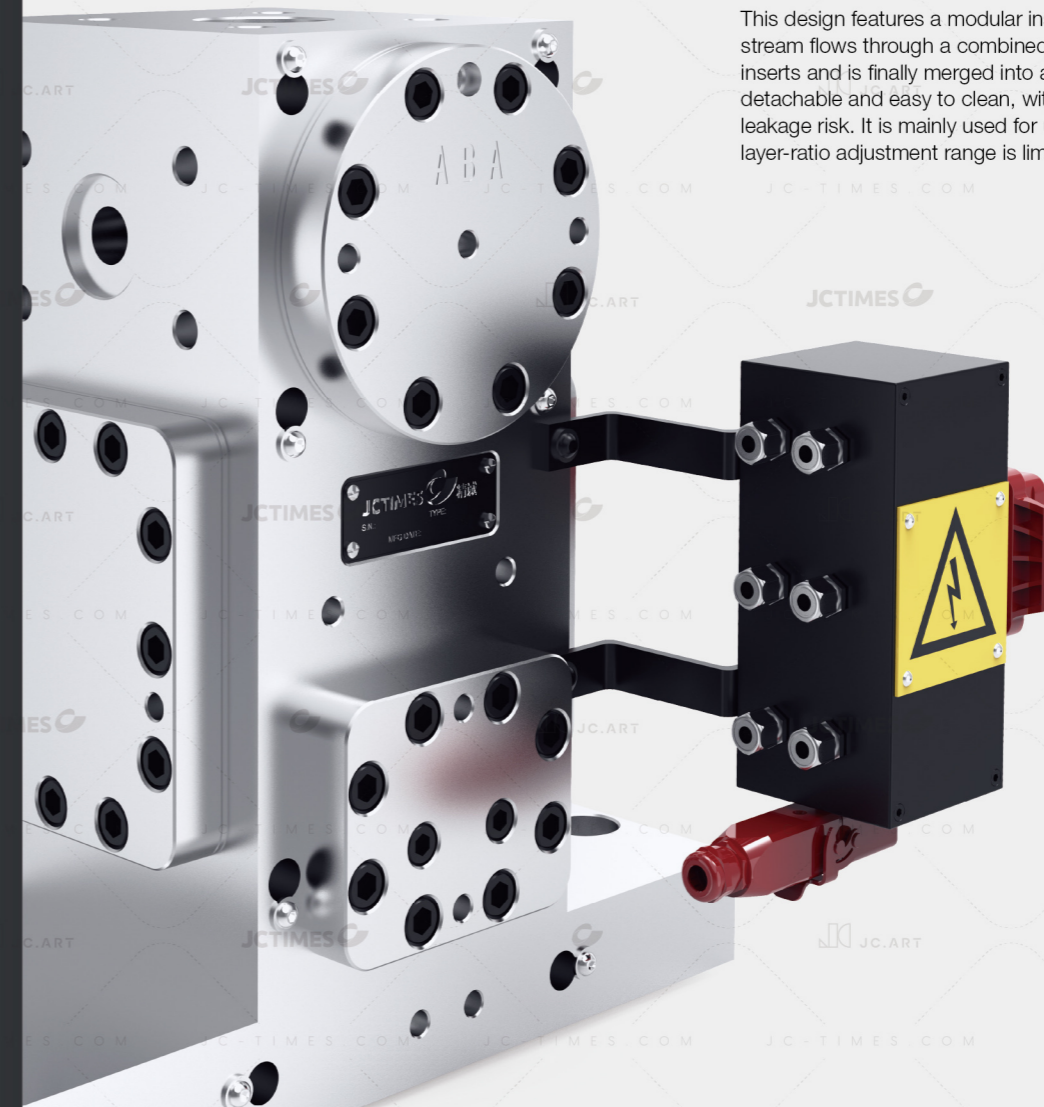
Its main function is to repeatedly stack two materials, using a multi-layer structure to enhance the physical properties of the final product.

## 纳米分配器

主要作用是将两种原料反复叠加，通过多层来增加产品物理性能。



## 组合镶块分配器



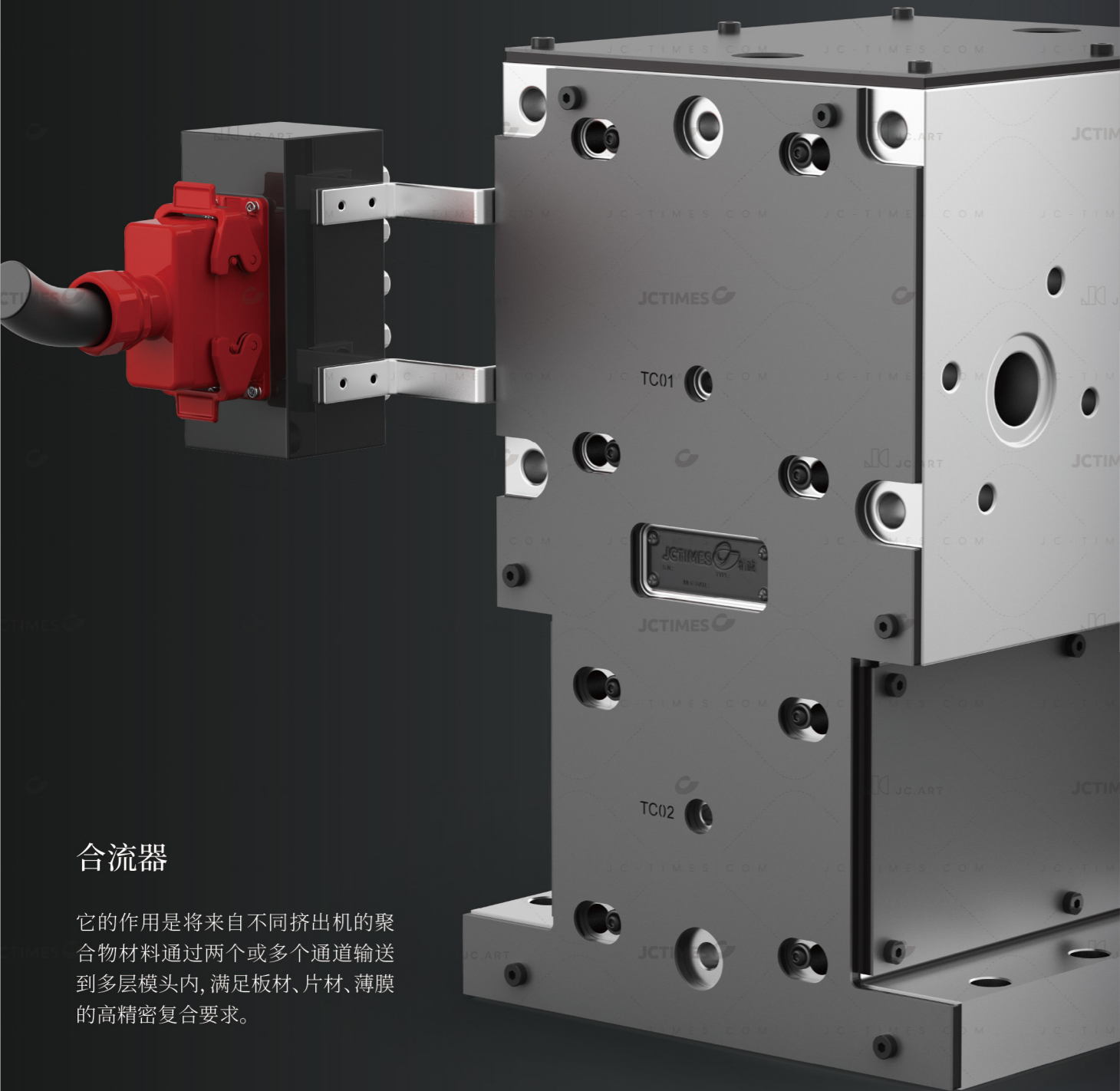
采用镶块组合式结构, 各层熔体在内嵌镶块形成的组合流道中汇合复合。结构可拆卸、易清洗, 耐压性好、不易泄漏, 适用于三层及以下、比例调节范围较小的多层挤出。

This design features a modular insert-block structure. Each melt stream flows through a combined flow channel formed by embedded inserts and is finally merged into a composite. The structure is detachable and easy to clean, with good pressure resistance and low leakage risk. It is mainly used for up to three layers, where the layer-ratio adjustment range is limited.

# Composite Insert-Block Feedblock

# 07 Combining Block

Its function is to transport polymer materials from different extruders through two or more channels into a multi-layer die, meeting the high-precision lamination requirements for plates, sheets, and films.



## 合流器

它的作用是将来自不同挤出机的聚合物材料通过两个或多个通道输送到多层模头内,满足板材、片材、薄膜的高精密复合要求。

## 仿真分析案例 (PVC三层分配器)

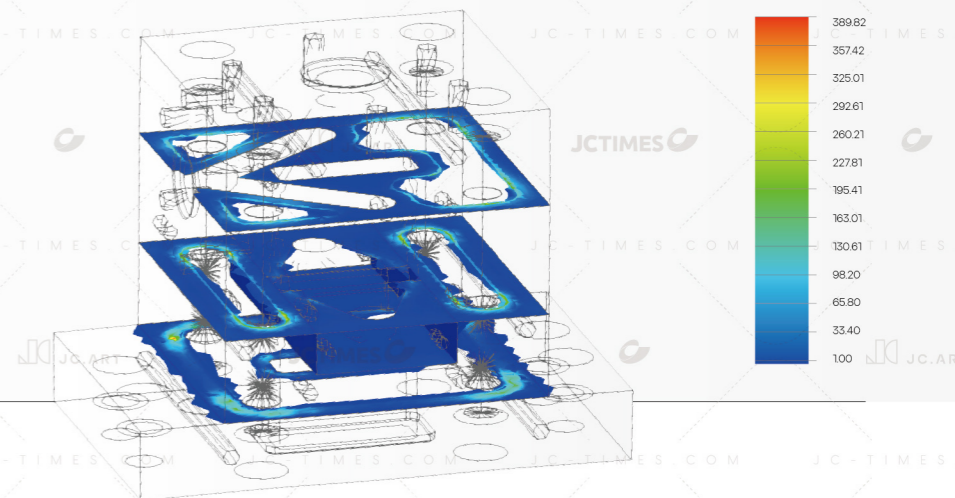
Simulation Analysis Case (PVC 3-Layer Feedblock)

边界条件设定: 熔体压力 22MPa

Boundary conditions: Melt pressure = 22 MPa

螺栓紧固后在22MPa熔体压力下分配器密封面受力分析

Stress analysis of the feedblock sealing surface under 22 MPa melt pressure after bolt tightening.



## 边界条件设定

Boundary Conditions

## 分析所用浆料流变数据

Slurry Rheological Data Used for Analysis

A-表层 A - Top Layer	240Kg/h-230°C
B-芯层 B - Core Layer	720Kg/h-230°C
C-底层 C - Bottom Layer	240Kg/h-230°C
浆料粘度 Slurry Viscosity	参考流变数据
浆料密度 Slurry Density	920Kg/m <sup>3</sup>
分配器表层宽度 Feedblock Top-Layer Width	100mm
每一幅涂宽 Coating Width of Each Strip	3300mm

## 分析所用浆料流变数据

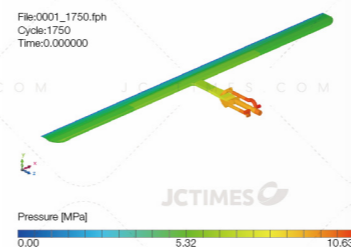
Rheological Data of the Slurry Used for Analysis

热封层C1料-T230粘度在60-750Pa·s范围

The viscosity of the heat-seal layer material C1-T230 ranges from 60 to 750 Pa·s

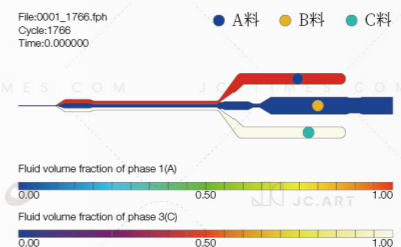
## 压力分布

Pressure Distribution



## 体积分数

Volume Fraction



## 导热分析

Heat Transfer Analysis

