

PRECISION EXTRUSION EQUIPMENT

精诚时代集团
浙江台州
黄岩新前建业路88号



WeChat
Public Account



JC-times.
com

JCTIMES GROUP

NO.88, Jianye Road, Intelligent Mold Town,
Huangyan, Taizhou, Zhejiang, China

400-889-9977

JCTIMES 精诚

精密挤出配套设备

From
Dreams
to
Reality

知您所需
创您所想

技术实力与创新能力

作为全球平模头行业的领军品牌,精诚时代集团深耕行业二十余年,见证并推动了中国平模头产业从无到有、从小到大、从大到强的发展历程。

建有全球最大的精密模头智能制造基地,并拥有独立的模头表面处理工厂。引入国际先进加工设备,结合全球领先的流体仿真分析技术,以技术创新为核心驱动力,致力于为全球客户提供高品质的挤出模头及配套解决方案。

在挤出模头市场占有率位居全球前列,产品远销40多个国家和地区,累计生产55000多套模头,为10000多家企业提供优质服务。全球多家500强企业均为精诚的重要客户,国内多数生产线装备企业也与精诚建立了紧密的战略合作伙伴关系。

核心产品

挤出平模头

吹膜圆模头

涂布模头

精密挤出配件

产品广泛应用于电子、汽车、建筑材料、航天航空、新能源(太阳能、动力汽车、锂电池)、医疗卫生、食品包装等领域,为客户提供全方位的解决方案。

O2 Company Profile

Technical Capabilities & Innovation

JCTIMES Group is a global leader in flat die technology, with over 20 years of industry experience. We have witnessed and contributed to the development of China's flat die industry from its beginnings to its current position as a world-class competitor.

We operate the world's largest precision die manufacturing base and have our own surface treatment facility. By combining advanced international production equipment with leading fluid simulation technology, we focus on innovation to provide high-quality extrusion dies and customized solutions for global customers.

Holds a top global market position in extrusion dies, with products exported to over 40 countries/regions. Accumulated production exceeds 55,000 die sets, serving 10,000+ enterprises with premium services. Multiple Fortune 500 companies are key accounts, while most domestic production line manufacturers maintain close strategic partnerships with the company.

Core Products

Extrusion Flat Dies
Blown Film Dies
Coating Dies
Precision Extrusion Equipment

Our products are widely used in electronics, automotive, building materials, aerospace, new energy (solar, EVs, lithium batteries), medical/healthcare, and food packaging industries, offering comprehensive solutions for customers.



O4 Feedblock

Insert-Type Feedblock, Mandrel-Type Composite Feedblock, Movable Vane Composite Feedblock, PVB Gradient Color Feedblock, etc.

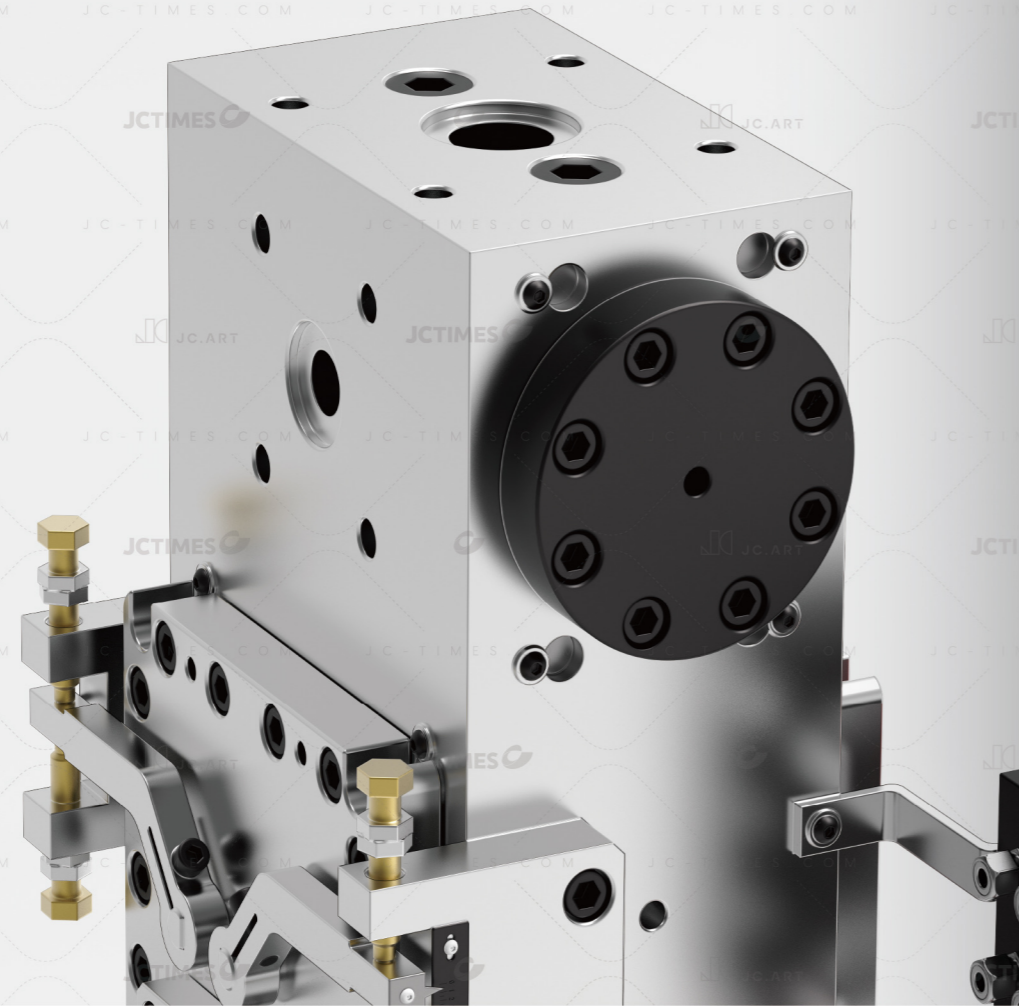
Compatible with materials of similar flow properties and processing temperatures, enabling production of multi-layer and multi-color composite products in various specifications. Suitable for multi-layer co-extrusion of diverse materials, meeting precise lamination requirements for plates, sheets, and films.

镶块式复合分配器、芯棒式复合分配器、摆叶式复合分配器、PVB渐变色分配器等。

适应多种流动性和加工温度相近的材料,可生产各种不同规格的多层复合及多色复合制品。适应各种材料的多层复合挤出,满足板材、片材、薄膜的精密复合要求。

摆叶分配器

Movable Vane Feedblock



镶块分配器

Insert-Type Feedblock



合流器

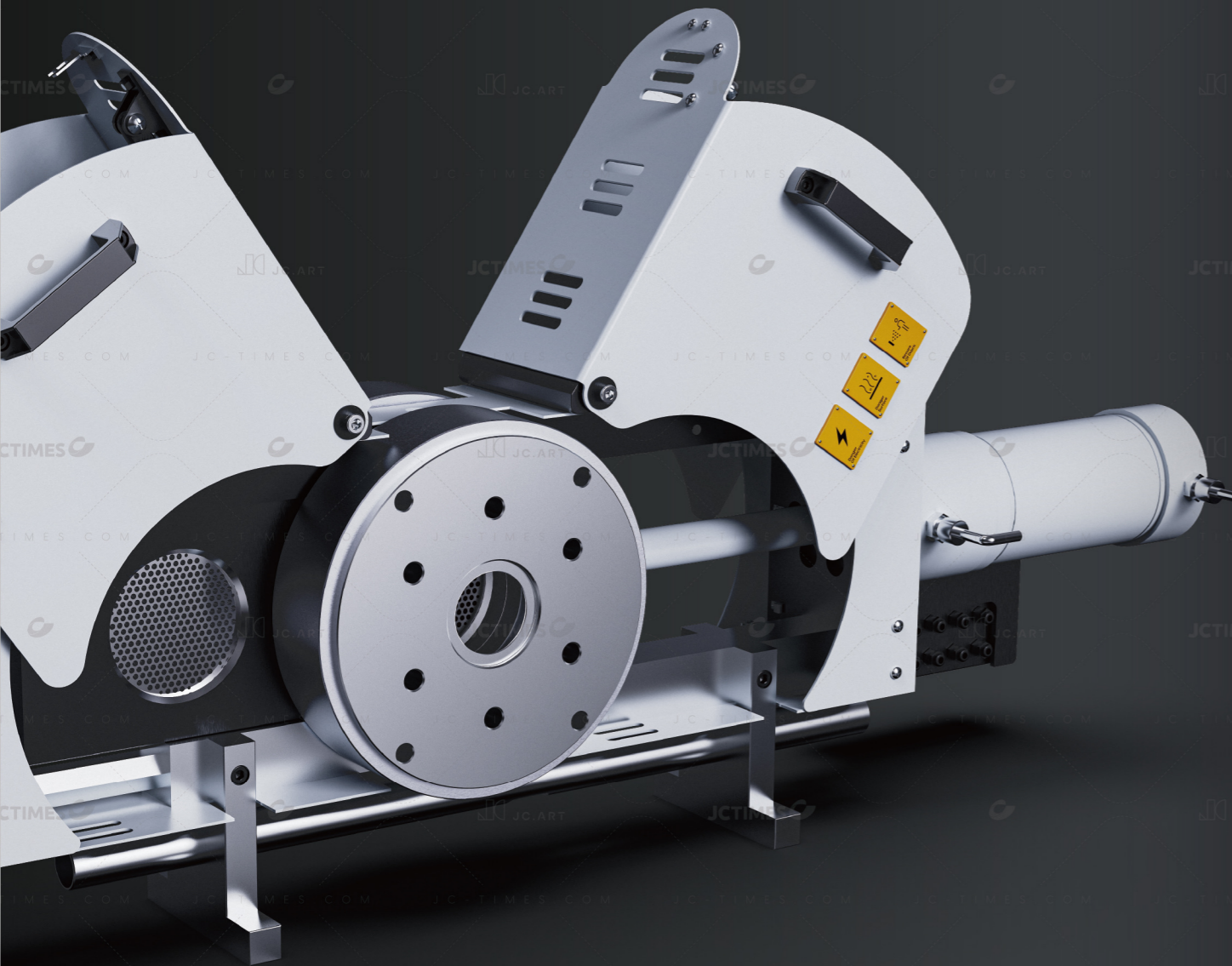
它的作用是将来自不同挤出机的聚合物材料通过两个或多个通道输送到多层模头内,满足板材、片材、薄膜的高精密复合要求。



O6 Distribution Block

Its function is to transport polymer materials from different extruders through two or more channels into a multi-layer die, meeting the high-precision lamination requirements for plates, sheets, and films.





单板双工位 过滤器

Single Plate Type
Double-working Station filter

采用柔性密封装置, 可以满足聚合物的高挤出量生产, 与不同标准的挤出机配合使用。

The flexible sealing device enables high-output polymer extrusion and is compatible with extruders of different standards.

O8 Filter Series Plate Filters

单板双工位过滤器

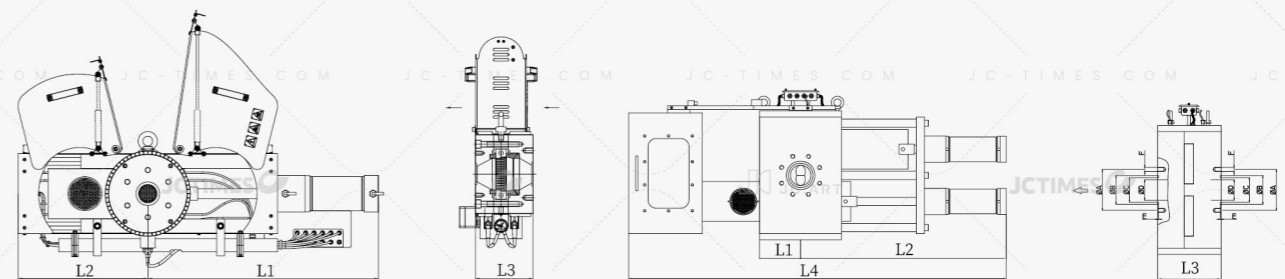
Single Plate Type Double-working Station filter

产品规格型号 Type	GD-SSP-C-70	GD-SSP-C-100	GD-SSP-C-120	GD-SSP-C-150	GD-SSP-C-180	GD-SSP-C-200	GD-SSP-C-250	GD-SSP-C-300
相关产量 output(kg/h)	75-200	130-350	190-500	350-880	450-1250	550-1500	800-2500	1200-3500
轮廓尺寸 size(mm)								
L1	760	853	915	1025	1125	1250	1405	1520
L2	400	455	495	570	635	715	810	880
L3	205	220	220	250	266	295	321	341
滤网尺寸 screen size								
直径 φ(mm)	70	100	120	150	180	200	250	300
面积 (cm ²)	38	78	113	176	254	314	490	706
产品重量 weight(kg)	120	170	230	300	390	640	770	950
加热器 Heater								
电压 Voltage(v)	230/400	230/400	230/400	230/400	230/400	230/400	230/400	230/400
总功率 Total power (kw)	4.9	5.8	6.9	8.5	10.9	15.3	17.6	20.4

双板双工位过滤器

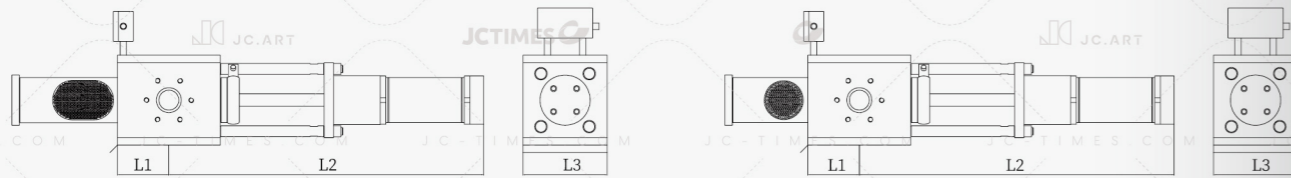
Double plate type double-working station filter

产品规格型号 Type	GD-DSP-80	GD-DSP-100	GD-DSP-120	GD-DSP-150	GD-DSP-180	GD-DSP-200	GD-DSP-250	GD-DSP-300
相关产量 output(kg/h)	110-300	180-500	350-800	450-1250	550-1500	800-2500	1400-3700	2500-5000
轮廓尺寸 size(mm)								
L1	140	170	200	245	290	320	395	470
L2	1015	1055	1185	1330	1505	1615	1940	2690
L3	220	250	310	350	400	450	450	500
L4	490	570	660	780	900	980	1180	1380
滤网尺寸 screen size								
直径 φ(mm)	80	100	120	150	180	200	250	300
面积 (cm ²)	2*38	2*78	2*113	2*176	2*254	2*314	2*490	2*706
产品重量 weight(kg)	270	450	680	1200	1700	2400	3200	4700
加热器 Heater								
电压 Voltage(v)	230/400	230/400	230/400	230/400	230/400	230/400	230/400	230/400
总功率 Total power (kw)	9.6	12.8	16	24	32	54	60	90.4



10 Filter Series Piston Filters

过滤器 -
柱式过滤器



单柱单工位B型非连续过滤器

Single Piston single working station B type discontinuous working filter

产品规格型号 Type	GD-SP-B-120	GD-SP-B-145	GD-SP-B-170	GD-SP-B-195	GD-SP-B-220	GD-SP-B-250
相关产量 output(kg/h)	180-450	280-600	600-1300	790-2500	990-3500	1570-4600
轮廓尺寸 size(mm)						
L1	130	145	182	200	215	220
L2	935	1048	1207	1298	1375	1428
L3	210	240	260	300	330	380
滤网尺寸 screen size						
直径 φ(mm)	100*145	125*170	150*230	175*270	200*300	230*310
面积 (cm²)	124	179	296	406	514	600
产品重量 weight(kg)	210	260	470	650	1000	1300
加热器 Heater						
电压 Voltage(v)	230/400	230/400	230/400	230/400	230/400	230/400
总功率 Total power (kw)	3.6	4.4	5.2	5.6	10.8	12.8

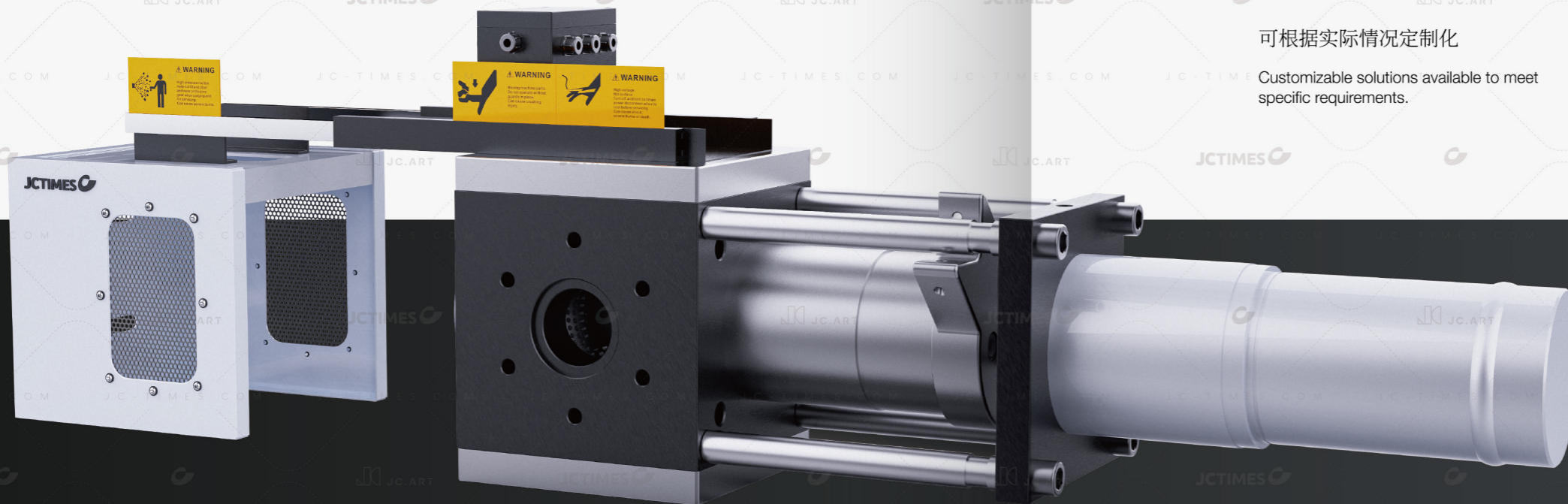
单柱单工位A型非连续过滤器

Single Piston single working station A type discontinuous working filter

产品规格型号 Type	GD-SP-A-100	GD-SP-A-120	GD-SP-A-145	GD-SP-A-170	GD-SP-A-195	GD-SP-A-220	GD-SP-A-250
相关产量 output(kg/h)	50-150	100-260	200-380	200-380	290-600	600-1300	800-2800
轮廓尺寸 size(mm)							
L1	100	110	125	125	135	160	180
L2	748	833	935	983	1055	1111	1215
L3	180	210	240	260	300	330	380
滤网尺寸 screen size							
直径 φ(mm)	80	100	125	125	150	200	230
面积 (cm²)	50	78	123	123	177	314	415
产品重量 weight(kg)	130	145	190	190	480	850	1150
加热器 Heater							
电压 Voltage(v)	230/400	230/400	230/400	230/400	230/400	230/400	230/400
总功率 Total power (kw)	3.2	4.0	4.8	6.4	6.4	12.8	12.8

可根据实际情况定制化

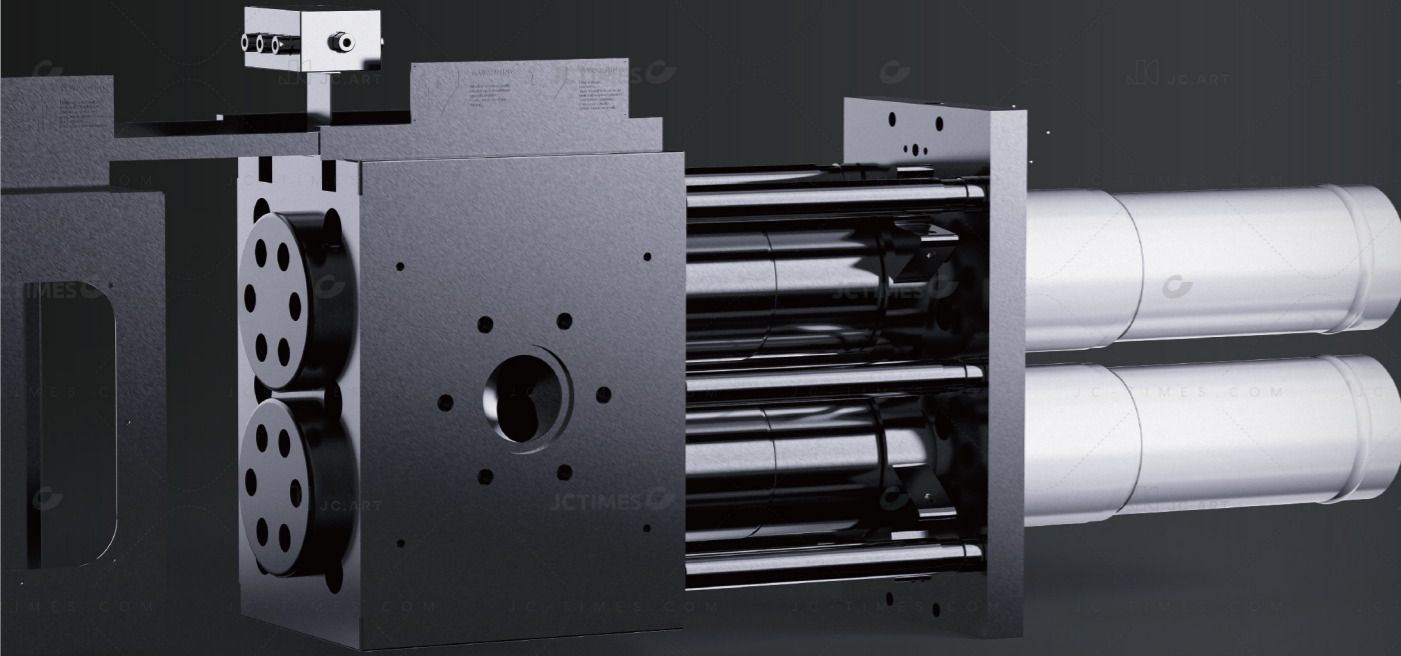
Customizable solutions available to meet specific requirements.



单柱单工位非连续过滤器

Single-Piston Single-Station
Discontinuous Filter

双柱双工位过滤器

Double Piston Double
Working Station Filter

全程精密加工和组装的过滤组件, 将流体中的硬颗粒和化学物滤除, 保证过滤品质。不锈钢滤网是过滤组件的重要组成, 滤网组(多层)以多孔板为骨架, 由低目数网片做支撑, 再外放置高目数滤网片, 最后在最外侧铺置低目数网片作为保护。

The precision-machined and assembled filtration components effectively filter out hard particles and chemical substances from fluids, ensuring filtration quality.

The stainless steel filter mesh is a critical part of the filtration assembly. The mesh stack (multi-layered) uses a perforated plate as its framework, supported by a low-mesh-count screen, followed by a high-mesh-count filter screen, and finally an outer layer of low-mesh-count screen for protection.

12 Filter Series
Piston Filters过滤器 -
柱式过滤器

双柱双工位A型过滤器

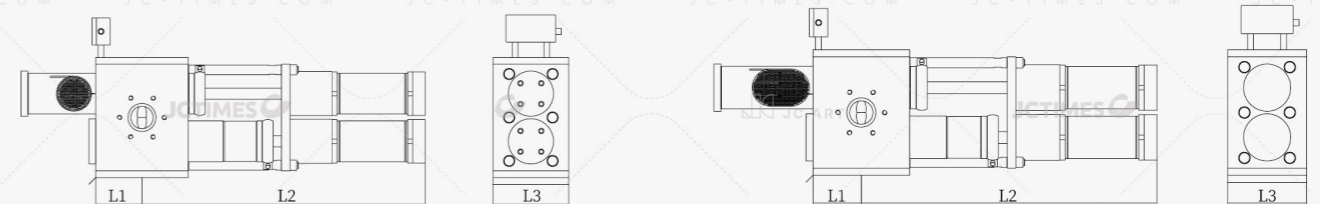
Double Piston Double Working Station A Type Filter

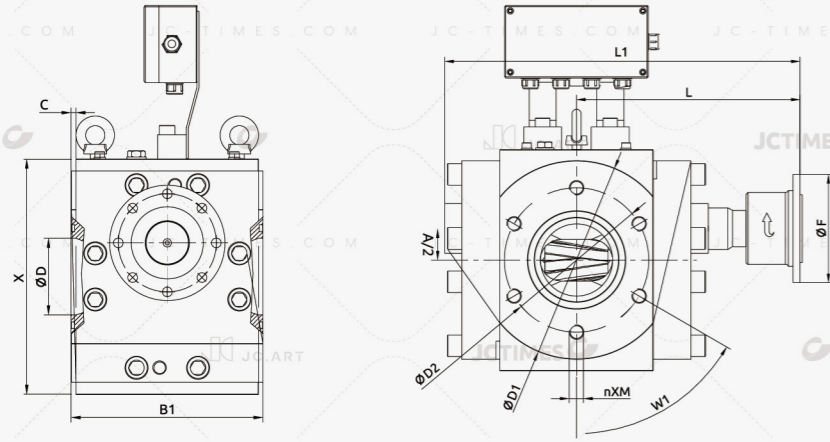
产品规格型号 Type	GD-DP-A-080	GD-DP-A-100	GD-DP-A-120	GD-DP-A-145	GD-DP-A-170	GD-DP-A-195	GD-DP-A-220	GD-DP-A-250
相关产量 output(kg/h)	30-180	150-250	200-380	300-700	400-1080	650-1500	820-1900	1100-2600
轮廓尺寸 size(mm)								
L1	125	125	125	165	195	220	245	280
L2	882	882	882	1035	1168	1270	1370	1500
L3	220	220	220	270	310	380	410	460
滤网尺寸 screen size								
直径 φ(mm)	60	80	100	125	150	175	200	230
面积 (cm ²)	2*28	2*50	2*78	2*123	2*177	2*240	2*314	2*415
产品重量 weight(kg)	210	260	305	490	850	1160	1700	2300
加热器 Heater								
电压 Voltage(v)	230/400	230/400	230/400	230/400	230/400	230/400	230/400	230/400
总功率 Total power (kw)	4.2	4.2	4.2	10.8	13.2	16.8	28	30

双柱双工位B型过滤器

Double Piston Double Working Station B Type Filter

产品规格型号 Type	GD-DP-B-120	GD-DP-B-145	GD-DP-B-170	GD-DP-B-195	GD-DP-B-220	GD-DP-B-250
相关产量 output(kg/h)	200-800	400-1100	680-1500	1000-2600	2300-4400	2900-6000
轮廓尺寸 size(mm)						
L1	150	165	220	240	280	310
L2	995	1090	1310	1430	1565	1673
L3	220	270	310	380	410	460
滤网尺寸 screen size						
直径 φ(mm)	100*145	125*170	144*230	169*270	200*300	230*310
面积 (cm ²)	2*124	2*179	2*286	2*395	2*514	2*600
产品重量 weight(kg)	315	490	850	1165	1820	2425
加热器 Heater						
电压 Voltage(v)	230/400	230/400	230/400	230/400	230/400	230/400
总功率 Total power (kw)	6.6	7.2	9.6	11.4	20	28





型号	GD-E28	D-E36	GD-E45	GD-F56	GD-E70	GD-E28	GD-E90	GD-E110	GD-E140	GD-E180	JC-90-E		
A/2	14	18	22.5	28	35	14	45	55	70	90	38.5		
B1	120	130	160	190	200	120	240	280	375	500	230		
C	4	4	5	5	5	D	7.5	7.5	7.5	7.5	5		
φD	32	42	55	68	80	32	104	125	165	220	100		
φD1	108	125	160	200	220	108	260	320	400	530	175		
φD2	75	95	115	140	160	75	185	215	280	350	240		
M	10	12	12	16	16	10	20	24	30	36	20		
N	6	6	6	6	6	6	6	6	8	8	6		
W1	40	40	45	45	60	40	45	60	45	45	45		
L	108.5	131	168.5	206	248	108.5	293	335	410	553	426		
L1	169.5	209	270	326	394	169.5	465	533	662	893	426		
φF	75	90	90	100	120	75	150	150	180	315	120		
加热功率 [KW]	0.5	0.8	2	3.2	4	0.5	7.2	10	16	26	4.4		
驱动功率 [KW]	2.2-3.5	3.5-5.5	5.5-7.5	7.5-11	11-15	2.2-3.5	25-30	30-45	45-54	75-90	15-18.5		
重量 [Kg]	10.2	16	34	65	92	10.2	157	252	524	1265	120		
排量 [cm³/rev]	10	25.6	46.3	92.6	176	10	371	716	1482	3200	250		
应用密度 (g/cm³)	高剪切敏感度 0.73	转数 (rpm)	最小	10	10	10	10	10	10	10	10	10	
		最大	130	130	130	120	110	130	100	90	80	70	90
	产量 (kg/h)	最小	4.1	10.4	18.9	37.7	71.7	4.1	151.1	291.7	603.7	1400	104
		最大	53.0	135.6	245.2	452.6	788.6	53.0	1511.2	2624.9	4829.4	9800	936
	中剪切敏感度 0.75	转数 (rpm)	最小	10	10	10	10	10	10	10	10	10	10
		最大	110	110	110	100	90	110	80	70	60	50	80
产量 (kg/h)	最小	4.2	10.7	19.4	38.8	73.7	4.2	155.3	299.6	620.2	1440	107	
	最大	46.0	117.8	213.1	387.5	662.9	46.0	1242.1	2097.5	3721.3	7200	856	
低剪切敏感度 1.15	转数 (rpm)	最小	10	10	10	10	10	10	10	10	10	10	
		最大	100	100	100	90	80	100	65	55	45	40	70
	产量 (kg/h)	最小	6.4	16.4	29.7	59.4	112.9	6.4	238.1	459.5	951.0	2208	150
		最大	64.2	164.3	297.1	534.8	903.5	64.2	1547.5	2527.0	4279.5	8832	1050

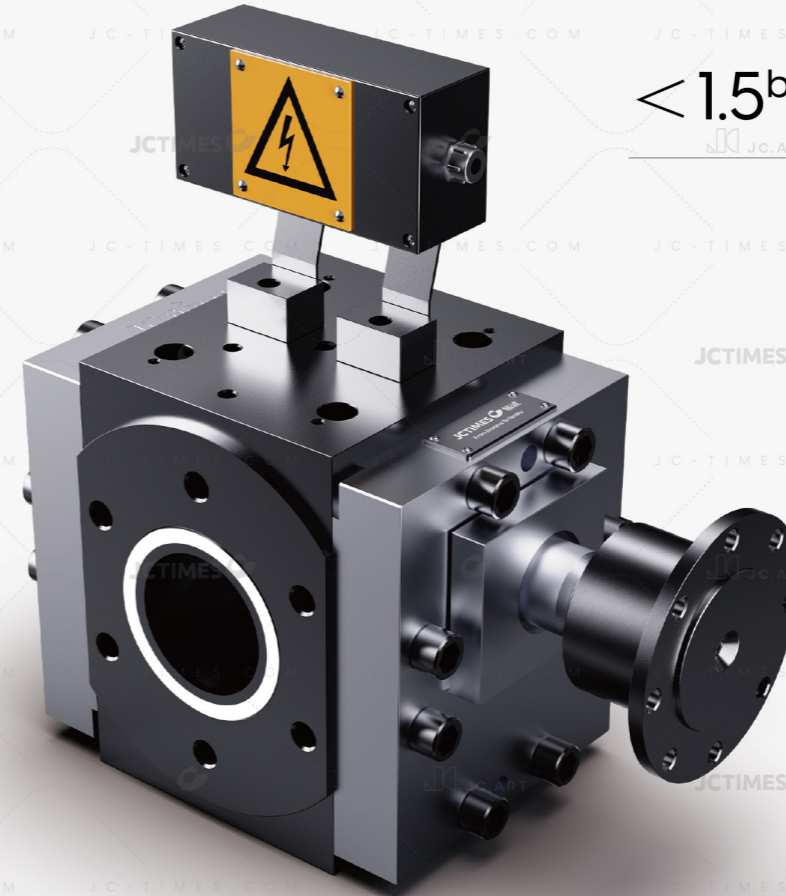
14 Melt Gear Pump

The ideal processing of low to high viscosity raw materials widely used in various fields is achieved by combining the best continuous operation with perfect product quality.

通过稳压功能
可将泵前的10-30bar波动范围
稳定在0.5-1.5bar之间

With the pressure stabilization function, the fluctuation range of 10-30 bar before the pump can be stabilized between 0.5 and 1.5 bar.

< 1.5 bar



熔体计量齿轮泵

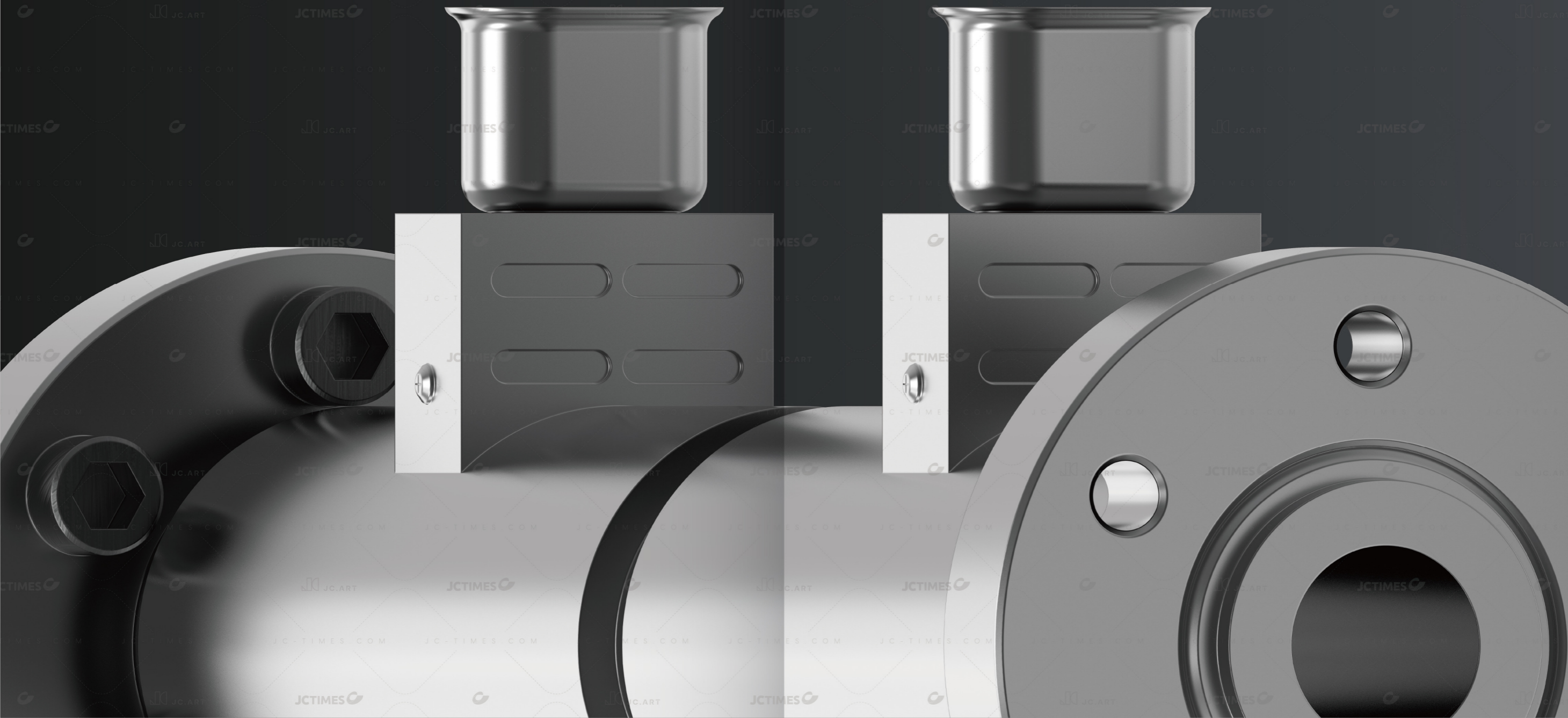
将最佳的连续操作和产品品质完美结合, 实现对各领域广泛使用的低粘度至高粘度原料的理想加工。

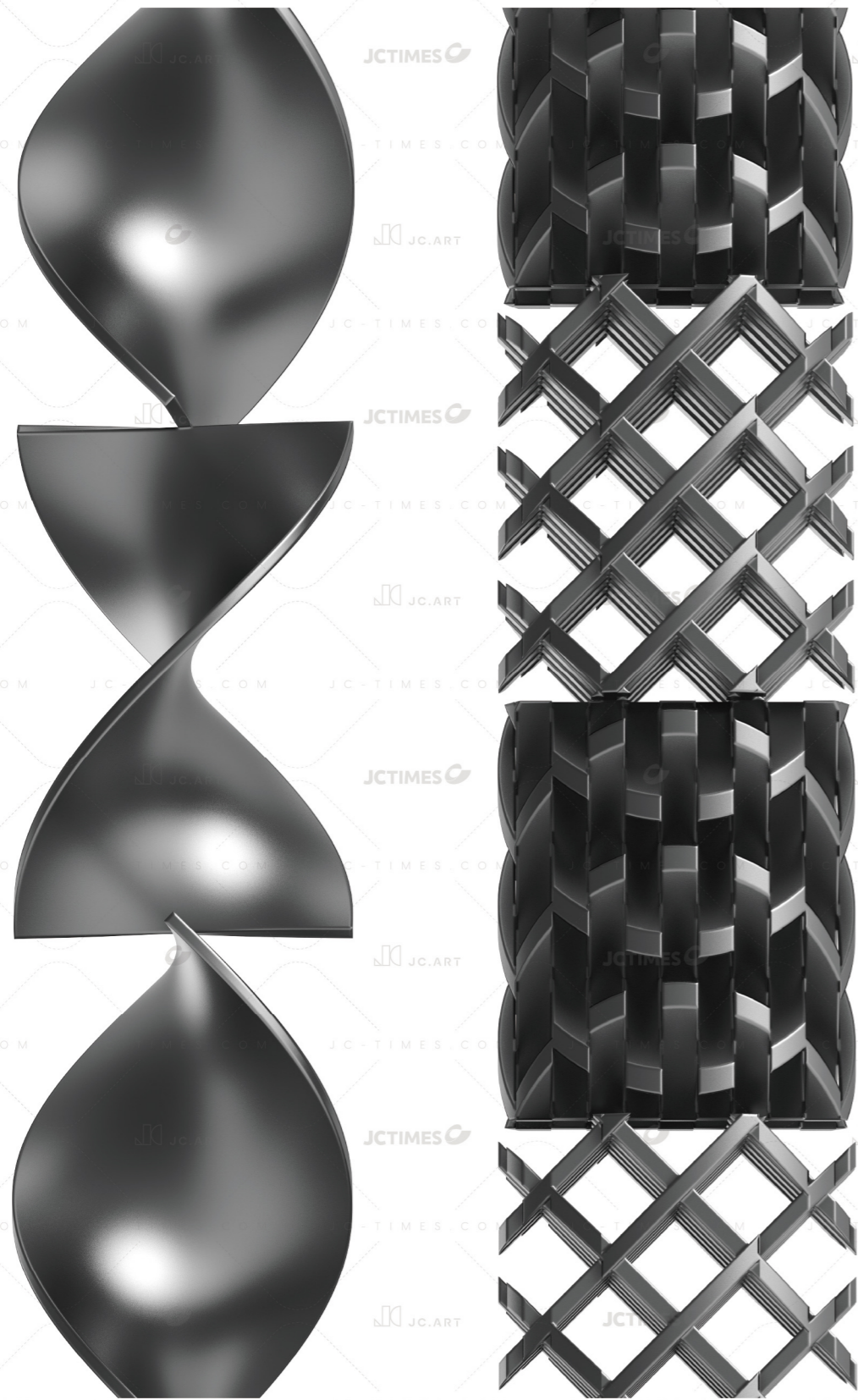
16 Melt Pipe

The function of extrusion melt pipes is to stably convey, temperature-control, and homogenize molten materials while connecting the extruder and die, ensuring continuous and efficient production.

熔体管道

挤出熔体管道的作用是稳定输送、控温均化熔融物料，并连接挤出机与模头，确保连续高效生产。





螺旋型 / 交叉型
Spiral Type / Cross-Type

18 Static Mixers

Through internally fixed mixing elements, the melt undergoes cutting, shearing, and rotation during flow, thereby optimizing fluid temperature distribution and achieving more homogeneous mixing.

Manufactured from high-quality stainless steel, they provide superior surface finish, mechanical strength, and corrosion resistance. Depending on the raw materials and production requirements, either spiral-type or cross-type mixing elements can be selected.

静态混合器其处理范围为

Static Mixer Processing Range

15cm³/h - 5000cm³/h

静态混合器

通过内部固定的混合单元结构, 促使熔体在流动过程中发生切割、剪切、旋转等, 进而优化了流体的温度分布, 使熔体混合更均匀。

采用优质的不锈钢材质加工具有较高的表面光洁度, 机械强度及耐腐蚀性。根据不同的原料以及生产要求混合单元有螺旋型和交叉型可选。

Optimized structural design ensures balanced outlet air pressure for stable and efficient output.

The adjustment device is equipped with multiple fine-tuning bolts to regulate the opening between the upper and lower air nozzles, further ensuring uniform wind speed. In film production, combined with vacuum air knife technology, it enhances film adhesion to the roller, ensuring consistent thickness and improving extrusion stability.



正压风刀

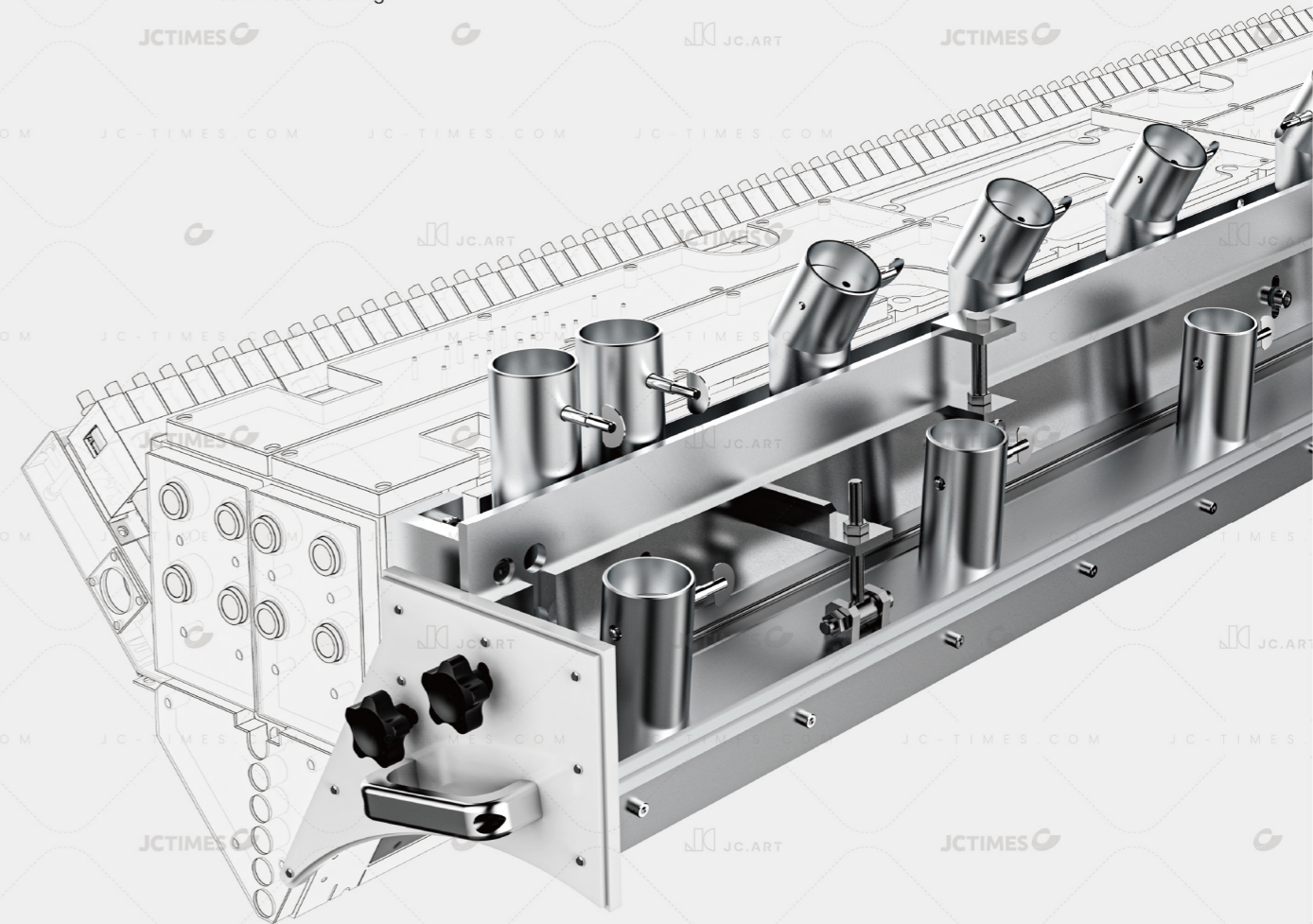
采用优化结构设计, 确保出口气流压力均衡, 实现稳定高效输出。

调节装置配备多个微调螺栓, 可调整上下风嘴间的开口, 进一步保障风速均匀。在薄膜生产中, 配合真空风刀技术, 使薄膜更贴合滚筒, 确保厚薄均匀并提升挤出稳定性。

20 Air Knife

On extrusion production lines, the vacuum box utilizes high-speed airflow and vacuum adsorption. Exhaust gases are discharged through suction ports to create negative pressure, achieving material stabilization, shaping, cooling, and surface control. Its adjustment mechanism allows for sealing strip-to-roller gap regulation, ensuring the cast sheet tightly adheres to the cooling roller for uniform film thickness.

The optimized design significantly improves product dimensional accuracy and surface quality while reducing defect rates. This technology is critical for polymer processing and continuous forming.



负压风箱

在挤出生产线上, 真空负压风箱利用高速气流与真空吸附, 通过抽风口排废气形成负压, 实现材料稳定、定型、冷却及表面控制; 其调节装置可调密封条与辊筒间隙, 确保铸片紧贴冷却辊, 保证薄膜厚薄均匀。

优化设计显著提升产品尺寸精度和表面质量, 降低废品率, 是高分子加工及连续成型的关键技术。